

DAIRY RANGE

INDIVIDUAL PREMIXES



OPTIGROW



HEIFER ADVANCED



GLYCOMIX



DAIRY E+B



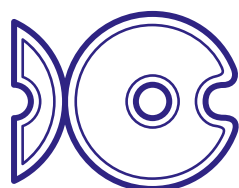
REDUSTRESS DC



MAXIDRY



INTRA TOXINBIND XPRO

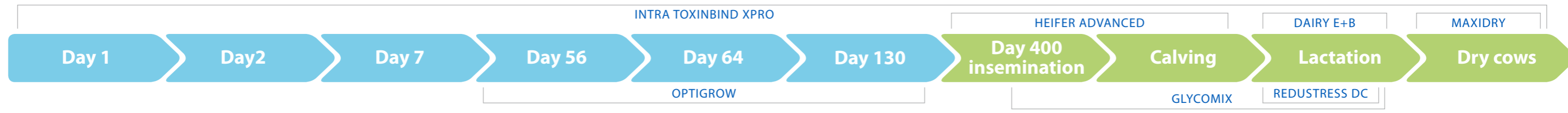


INTRACO Ltd.

Expert advice & responsible solutions

WWW.INTRACO.BE

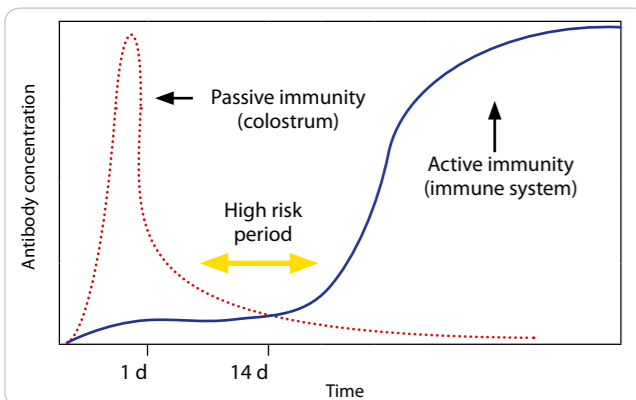
DAIRY TIME - LINE



DAY 1 – DAY 64: COLOSTRUM - MILKREPLACER

→ DAY 1:

- 2 x 2 liter colostrum (beestings)/animal, first 2 l within 3 hours
- immunity building
- antibodies
- stomach tubing



→ DAY 2 to 56:

- 2 x 3 liter milk = 125g milkpowder + 875g water

→ DAY 56 to 64:

- 1 x 3 liter milk, no more milk after day 64

→ DAY 7 to 64:

- supplement water and first roughage as finely chopped straw (5%)



DAY 7 – DAY 130: OPTIGROW

→ DAY 7:

- Calf starter diet (17% - 18,5% crude protein)

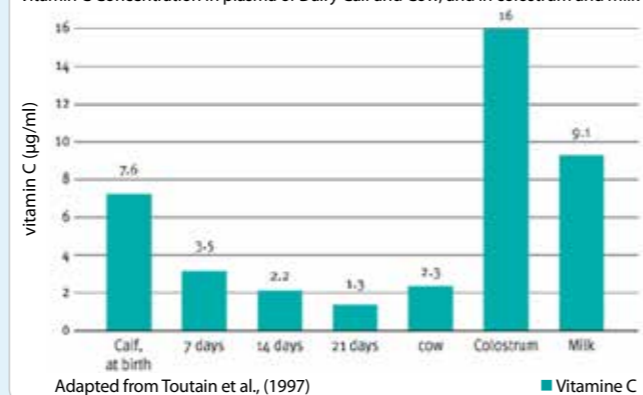
→ DAY 10/14 to 130:

- ad libitum powerfeed + 10% of total ration as roughages

INTRACO OPTIGROW PX:

- VITAMINS B: high inclusion of B12
- VITAMIN C:

Vitamin C Concentration in plasma of Dairy Calf and Cow, and in colostrum and milk



- **BIOTINE:** avoid paralysis of hind legs and respiratory system
- **SELENIUM** from inactivated selenized yeast
- **PROBIOTIC: ENTEROCOCCUS FEACIUM** to reduce digestive upset and to increase daily weight gain in pre-weaning period

100 g more growth in d1 – d65
= 226 kg more milk in first lactation

- **INCLUSION:** 3% in total ratio
- **DAY 7:** provide sufficient water (ideal 15°C and 17°C)

DAY 130 – INSEMINATION: HEIFER ADVANCED

- Roughages
- Powerfeed
- Total protein:
 - Until 10 months: Total diet 17.5% protein
 - 10 months – insemination: Total diet 15.5% protein
- INTRACO HEIFER/HEIFER ADVANCED PX**
- **INCLUSION:** 100g/day/animal



INSEMINATION – CALVING: HEIFER ADVANCED

- Roughages
- Powerfeed
- Total protein: min. 14.5%

INTRACO HEIFER/HEIFER ADVANCED PX

- chelated zinc
- chelated selenium
- biotin
- **INCLUSION:** 150g/day/animal



LAST WEEK OF GESTATION - FIRST 60 DAYS LACTATION PERIOD GLYCOMIX

- Enhanced uptake of propylene glycol -> higher energy intake
- Pre calving
 - Propylene glycol direct taken up in blood-> increased calf development
 - Better start of milk production
- Post calving
 - Prevention of ketosis and maintaining fertility
 - Prevents prolonged milk production disorders
- **INCLUSION:** 150-350g/day/animal

LACTATION PERIOD: DAIRY E+B

- Roughages
- Powerfeed
- Total diet protein: 16% - 16,5%
- INTRACO DAIRY E+B PX**
- high vitamin inclusion
- vitamin E supplement
- biotin supplement
- **INCLUSION:** 40g/day/animal



DRY PERIOD: MAXIDRY

- Roughages
- Powerfeed
- Total diet protein: 12- 13% -> close up 14,5 - 16%

50% of lactation diet

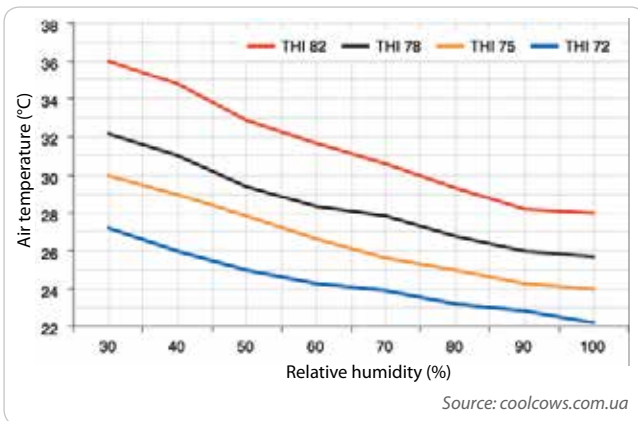
INTRACO MAXIDRY (MAXIDRY DELUXE) PX

- **VITAMINS B:** - poorer diet = less vitamins B in rumen
- stress: less vitamin B
- **VITAMIN D3 + MAGNESIUM:** prevention of calf disease
- **ZINC CHELATED:** prevention of mastitis
- **SE CHELATED + VITAMINE E:** prevention of mastitis and metritis
- **BETA CAROTENE:**
 - better colostrum quality
 - earlier heat detection
 - better oestrus expression
 - less insemination per conception
- **INCLUSION:** 200g/day/animal



HEAT STRESS LACTATION: REDUSTRESS DC

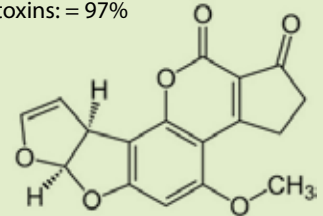
- **Temperature Humidity Index (THI):** it accounts for the combined effects of environmental temperature and relative humidity, and is a useful and easy way to assess the risk of heat stress.
- $THI\ ^\circ C = (1.8 \times T + 32) - ((0.55 - 0.0055 \times RH) \times (1.8 \times T - 26))$
- When the **THI exceeds 72**, cows are likely to begin experiencing heat stress and their incalf rates will be affected.
- When the **THI exceeds 78**, cows milk production is seriously affected.
- When the **THI rises above 82**, very significant losses in milk production are likely, cows show signs of severe stress and may ultimately die.



- **HEAT STRESS MANAGEMENT:**
 - Water: access to clean drinking water. Lactating cows will need 150l/day
 - Shade
 - Cooling: sprinklers and fans
 - Management: reduce walking distance to the dairy, minimize handling stress, later afternoon milking times
- Feed: **INTRACO REDUSTRESS DC:**
 - Essential Oils: rumen activity, feed intake and future milk production
 - Vitamin E & C: More radicals -> oxidation
 - Vitamin B1: rumen acidification
- **INCLUSION:** 150-200gr/day/animal

MILK TOXINS PREVENTION: INTRA TOXINBIND XPRO

- LOWER TOXINS = MORE PROFIT
- **INTRA TOXON BIND XPRO:** * see add optionals
 - binding capacity for aflatoxins: = 97%



Contact us for tailor made solutions



B-2000 Antwerp/Anvers
Belgium/Belgique
Phone/Tél +32 3 226 98 50
E-mail intraco@intraco.be



WWW.INTRACO.BE

